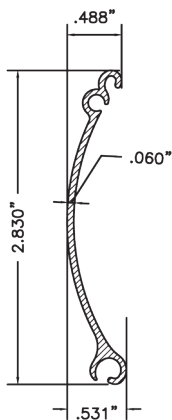
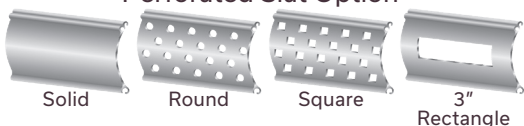




## CHD-6 SINGLEWALL SLAT

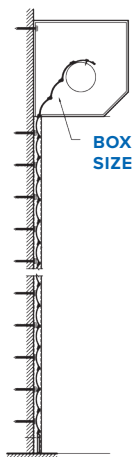
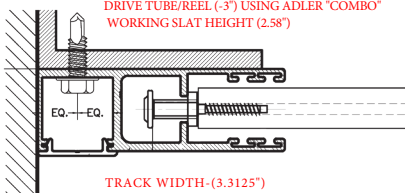


- Hurricane Rated
- **FBC, IBC, TDI, DADE**
- **FL 39353, HVHZ**
- **FL 39354 Non HVH2**
- US Patented # D750276
- Small Box Sizes
- S. S. Retention Screws
- Snap Cap Track Cover
- Perforated Slat Option



BOX SIZE	FINISH HEIGHT
6"	50"
7"	88"
8"	120"
10"	192"
12"	240"

SHUTTER FINISH SIZE:  
 SLAT DEDUCTION (-.4625")  
 DRIVE TUBE/REEL (-3") USING ADLER "COMBO"  
 WORKING SLAT HEIGHT (2.58")



### TECH INFO

Weight per/ft . . . . . 0.264 lbs.  
 Area Slat per sq/in. . . . . 0.220 lbs.  
 Max Width . . . . . 21'.8"  
 Max Height. . . . . 20 ft.

### COLORS OPTIONS



**866-783-2105**  
[www.chicagone.com](http://www.chicagone.com)